

Improved legsupport attachment on SWING

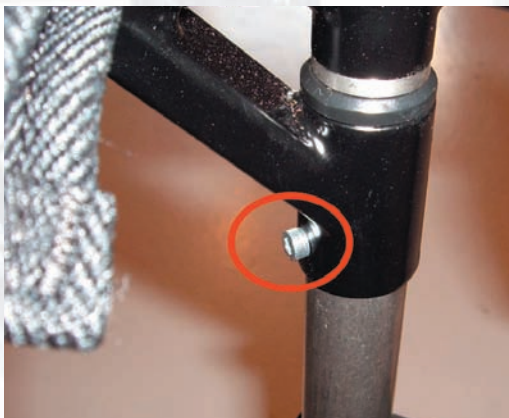
Used with heavy load, the attachment for the legsupport on Panthera Swing could come loose slightly. See upper image..



There is no risk for the attachment to come loose completely, just a small gap will occur between the vertical chassi tube's (unpainted) upper limit, and the chassi socket. The function of the swing-away leg-rest could get less accurate.

There is no risk of using a wheelchair with this defect..

Make sure to check this part at service or re-conditioning.



What we have done is to add two slits on the vertical tube to make it expand against the socket correctly and that the glue gets a good grip. We have also added a stop screw to strengthen the attachment even more. See lower image.

If you have a wheelchair with this defect, you will get you a new reinforced chassi through warranty for free.