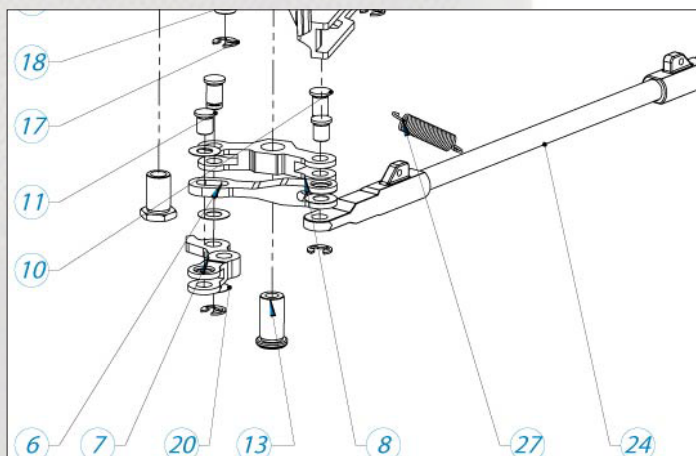


# panthera®

Info sheet  
2012-08-29

## New pull spring for the Panthera X brake



We have detected that a handful of the pull spring (no. 27) on the Panthera X brake, delivered to our customers, do not meet our requirements for quality. It might tear off after a period of use. Therefore, we would like to ask our customers to replace this spring with the new, stronger pull spring.

To replace the spring just disengaged the brake and detach the old spring and then attach the ends of the new spring into the holes, marked with circles in the image.

Engage the brake and disengage it again to see that it springs back properly.

**Note:** We do not regard this as a safety issue. Even without the spring the brake is fully operational.



[Click here to see instruction film.](#)

