

UPGRADED PUSH HANDLE ATTACHMENT S3

Click on images for larger format



Push handle attachment

Parts push handle attachment - Left

UPGRADED ATTACHMENT FOR PUSH HANDLE AND PUSH BAR S3.

Panthera is upgrading the attachment for its S3 push handles and push bar.

This attachment has been designed to enable more straightforward installation and includes a function for easy adjustment, so the push handles can be assembled fully aligned.

In tandem with the upgraded backrest (see [info sheet 2017-13](#)), the new attachment provides the push handles with increased stability.

The new push handle attachment is backwards compatible with the S3 Backrest.

The former push handle attachment cannot be used with the S3 Backrest ver.2.

These attachments are to be included with ver.2 S3 backrests from 2 October 2017, inclusive.

The item number for the push handle attachment will be:

art.no. 4252302 VER2 Attachment pushhandle S3 Right

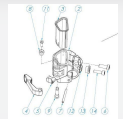
art.no. 4252301 VER2 Attachment pushhandle S3 Left



LINK TO
ASSEMBLY VIDEO
BACKREST S3



LINK TO
ASSEMBLY VIDEO
BACKREST S3 VER 2



LINK TO
EXPLODED VIEW