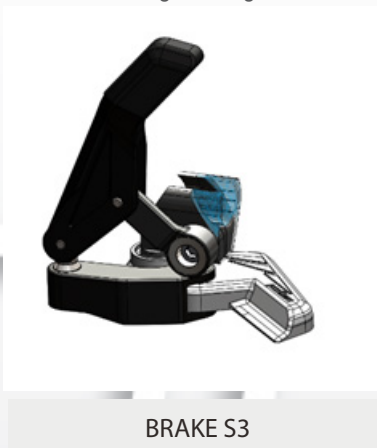


IMPROVEMENT OF BRAKE S3

Click on image for larger format



BRAKE S3

Improvement of Brake S3

As part of our continuous improvement work, we are introducing a change in the design of the clamp on brake S3.

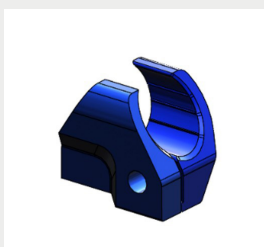
The new clamp gives an increased contact surface to the chassis tube and therefor an improved clamping force.

We will start deliver the "Brake S3 Extended lever" with this new clamp from October 27:th 2021, and the other S3 brakes will be delivered with the new clamp as the old versions ran out of stock.

Function, handling and mounting of the brake is unchanged.

The new clamp is an integrated part in:

art.no.	Description
4630000	Brake S3 cpl pair
4630001	Brake S3 left
4630002	Brake S3 right
4630010	Brake S3 move forward cpl pair
4630011	Brake S3 move forward left
4630012	Brake S3 move forward right
4630020	Brake S3 extended lever cpl pair
4630021	Brake S3 extended lever cpl left
4630022	Brake S3 extended lever cpl right



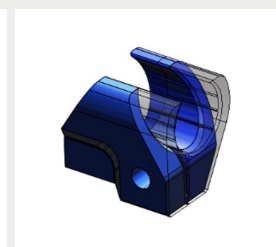
Present clamp for
right brake
seen from outside

art.no. 4630112 outer R
art.no. 4630102 inner R
art.no. 4630111 outer L
art.no. 4630101 inner L

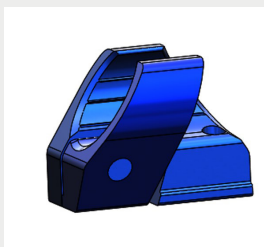


New clamp for
right brake
seen from outside

(1) art.no. 4630114 outer R
(2) art.no. 4630116 inner R
(1) art.no. 4630113 outer L
(2) art.no. 4630116 inner L



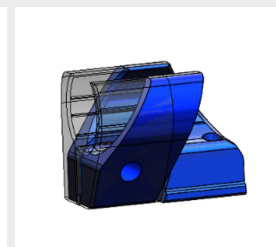
Comparison between
the two



Present clamp for
right brake
seen from inside



New clamp for
right brake
seen from inside



Comparison between
the two

Please contact Panthera if you have questions.

Contact person at Panthera:

Export / Marketing Manager

Helena Lemoine

Tel: +46-557 608 77

E-mail: helena.lemoine@panthera.se