



Att: Prescribers
Technicians
Purchasers

Info sheet 2010-5

2010-11-10

NEW STANDARD REARAXLE ON BAMBINO 24 cm

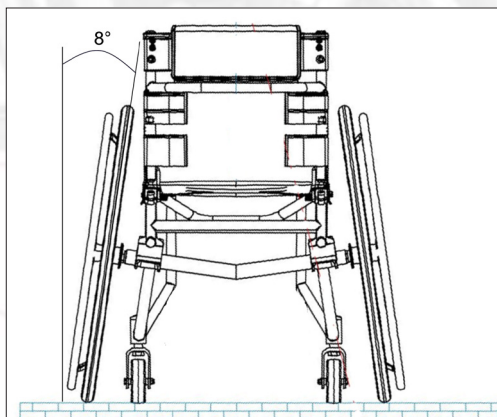
From the 18:th of October we introduce a new standard rearaxle on Bambino 24 cm. Before we used the carbon rearaxle with 2 degrees camber but now we will use a steel rearaxle with 8 degrees camber instead as standard. This is to improve the manoeuverability and make Bambino 24 even more easy to turn and to increase the stability.

You can of course continue to use the carbon rearaxle if desired. Make a notice in the orderguide for Bambino, that you wish to have the carbon axle.

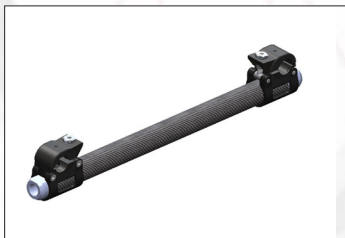
55 cm will be the total width for Bambino 24 with the camber rearaxle 8 degrees and 22" rearwheels.
45 cm will be the total width for Bambino 24 with the carbon rearaxle and 22" rearwheels.



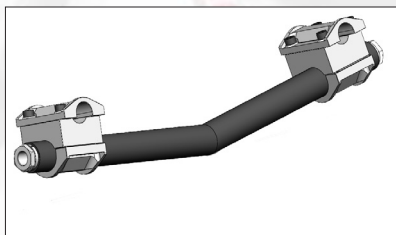
Bambino 24



Camber axle 8 degrees increase the angle of the rearwheels.



Carbon rearaxle



Camber rearaxle 8 degrees