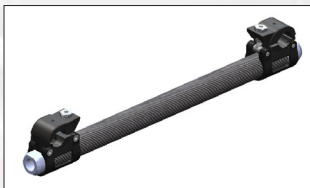


## Assembly instructions

### CARBON REAR AXLE



The washers and nuts used for the earlier rear axle model (8, 12 and 16 mm) have now been replaced for the new rear axle and clamps by two different rear axle lengths.

(+ 0 cm) and (+1,5 cm) The length of the axle is depending on the accessories used on the chair. The longer (+ 1,5 cm) could be needed when using accessories like armrests or side guards for certain models of chairs. Please contact Panthera for more info.

To find out to what chairs size the axle is for, you can measure the length of the axle.

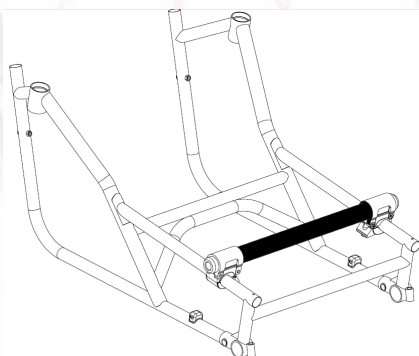
Axle(+0cm) is 4,0cm longer than the chair size.  
Axle(+1,5cm) is 5,5cm longer than the chair size.  
Eg. the axle measures 44,5 cm ("the half centimeter" shows that it is a (+1,5 cm) axle). Withdraw 5,5 cm and that gives 39 cm (the chair size)

To assemble the rear axle you will need: a size 3 Allen key, a 15 mm width box wrench and a tape measure or ruler.

How to assemble the back axle on the chassis:

1. Place the chassis on its rear with the underside of the frame upwards.

next page.



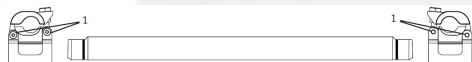
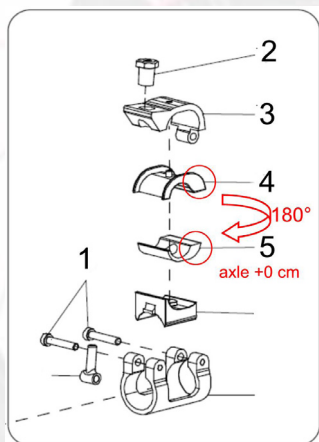
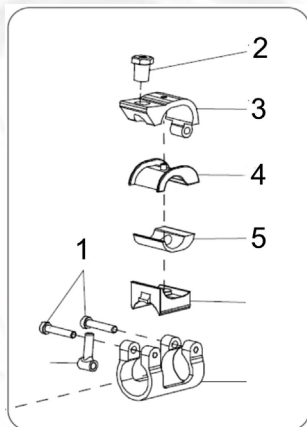


Bild 1.



Bild 2.



2. Loosen the screws (1) on the clamps if they are screwed in securely. They should not be completely removed but should be loosely in place.

3. Push the clamps onto the rear axle. NB! The clamps should match the bevelled surface of the ends of the rear axle, see Fig 1. The clamps should be pushed on as far as they will go and the ends of the rear axle should protrude about 12 mm, see Fig 2

4. Loosen the bushing (2) completely on both sides and open the clamps (3).

5. Place the rear axle transversely onto the longitudinal chassis bar and close the clamps, see figure 3.

6. Tighten the bushings a couple of turns and push the axle to the desired balance position.

7. Check that the clamps are equally far forward on both sides. This is easily done by measuring with a ruler or tape measure from the clamps to the ends of the longitudinal chassis bar. The distance should be the same.

8. Tighten the socket screws (1).

9. Tighten the bushings (2) to 7 Nm

## Assembly of axle +1,5 cm.

When mounting of the axle +1,5 cm the parts (4 and 5) should be turned, with the wide side outwards, against the rear wheels.

## Assembly of axle + 0 cm.

When mounting of the axle +0 cm the parts (4 and 5) should be turned, with the wide side inwards, against the seat.