

PUSH HANDLE ATTACHMENT S3 FOR PREVIOUS BACKREST



Assembly instruction (adjustment side 2) for:
Push handle attachment S3, for **previous back**;
art.no. 4252300

Tools needed:
Bits with Allen key 4 mm
Key 8 mm, 10 mm
Allen key 2,5 mm



1) Open up the backrest upholstery to get easy access.



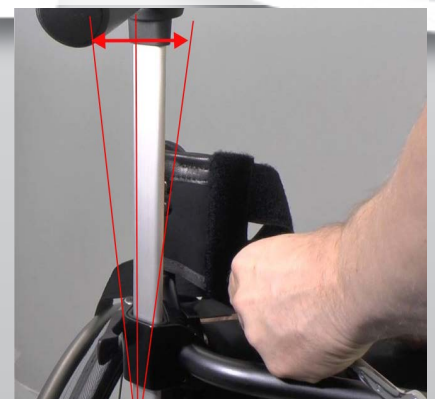
2) Bring out an attachment, there is a left and a right version, place the "closed" metal cup into big hole in the attachment, from the inside.



3) Open up the attachment and place it around the backrest tube, and let the metal cup guide the attachment onto the knob at the backside of the tube. Fold the attachment and mount the M5 screw.



4) Tighten the screw with allen key 4 mm. Repeat the procedure on the right side.



5) If the angle of the push handle needs to be adjusted, you can turn the excentric metal cup with a 10 mm spanner.. Start with loosen the screw that holds the attachment, a bit.



6) Use a 10 mm spanner and turn the metal cup forwards or backwards until the push handle is vertical.



7) Tighten the screws for the attachment. Repeat the procedure on the other side..

ADJUSTMENT OF LOCKING LEVER



1) If the locking of the push handle is insufficient, you can adjust this according to the following instructions..



2) Disassemble the push handle. Loosen this screw a few turns with allen key 2.5 mm.



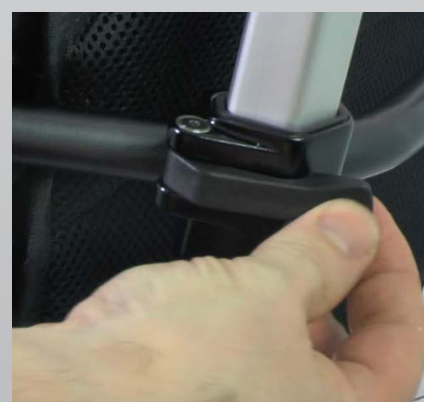
3) Push the screw downwards until the nut on the underside gets visible



4) Adjust the locking force by turning the nut anti-clockwise (seen from the top) to increase it, and clockwise to decrease the locking force. Turn the nut a quarter of a turn, using a 8 mm spanner, tighten the screw and test it..



5) Tighten the screw and make sure that the nut slides into the attachment properly.



6) Mount the push handle and check the locking force. Repeat step 3-5, if adjustment is needed.