

Assembly instruction Sideguard Carbon



Carbon with large cover



Carbon with small cover

The sideguard Carbon is made of carbon fibre and are designed to be used on wheelchair Panthera X and U2 light. The sideguards prevents clothes or similar to get into the wheels and protect the clothes from dirt. The Carbon sideguard comes in two versions, one with small cover and one with large cover. The sideguards with large cover covers more of the tyre, as shown in the picture.

To mount the sideguards on the wheelchair there are a number of different attachments, to make it fit properly. What determines which attachment to use is the model of the wheelchair, the size of the rearwheels and on U2 light, the height of the backrest.

Wheelchair model	Rearwheel size	Sideguard	Attach. front	Attach. rear	Plate
X	24"	Carbon large	Fig.1	Fig 2	Fig 8
X	24"	Carbon small	Fig 1	Fig 2	Fig 8
X	25"	Carbon large	Fig 1	Fig 3	Fig 10
X	25"	Carbon small	Fig 1	Fig 3	Fig 10
X	26"	Carbon large	Fig 1	Fig 3	Fig 10
X	26"	Carbon small	Fig 1	Fig 3	Fig 10
U2 light	24"	Carbon large	Fig 4	Fig 5	Fig 9
U2 light	24"	Carbon small	Fig 4	Fig 5	Fig 9
U2 light backrest 30, 35, 40	25"	Carbon large	Fig 4	Fig 6	Fig 10
U2 light backrest 25	25"	Carbon large	Fig 4	Fig 7	Fig 10
U2 light backrest 30, 35, 40	25"	Carbon small	Fig 4	Fig 6	Fig 10
U2 light backrest 25	25"	Carbon small	Fig 4	Fig 7	Fig 10
U2 light backrest 30, 35, 40	26"	Carbon large	Fig 4	Fig 6	Fig 10
U2 light backrest 25	26"	Carbon large	Fig 4	Fig 7	Fig 10
U2 light backrest 30, 35, 40	26"	Carbon small	Fig 4	Fig 7	Fig 10
U2 light backrest 25	26"	Carbon small	Fig 4	Fig 7	Fig 10

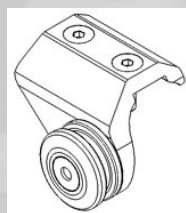


Fig.1
Attach. X front

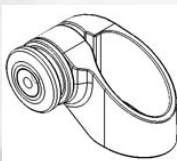


Fig. 2
Attach X rear



Fig. 3
Attach X 25-26" rear



Fig. 4
Attach U2 light front



Fig. 5
Attach U2 light rear



Fig. 6
Attach U2 light 25"-26" rear
Backrest 30, 35, 40 cm



Fig. 7
Attach U2 light 25"-26" rear
Backrest 25 cm



Fig. 8
Plate X

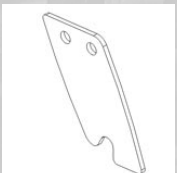


Fig. 9
Plate U2 light

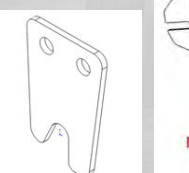
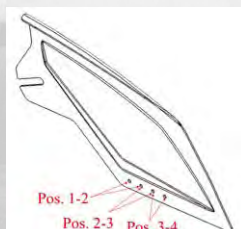


Fig. 10
Plate 25"-26"



At different backrest positions the mounting plate can be adjusted into alternative positions on the sideguard.



Fig. 11



Mounting on Panthera X

Rearwheel 24"



Fig. 12

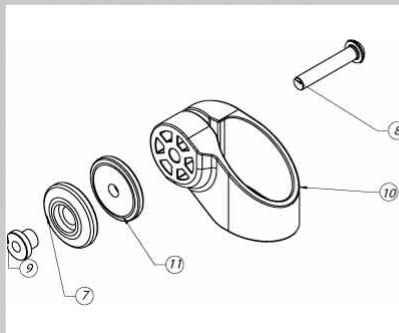


Fig. 13 Rear attachment, right

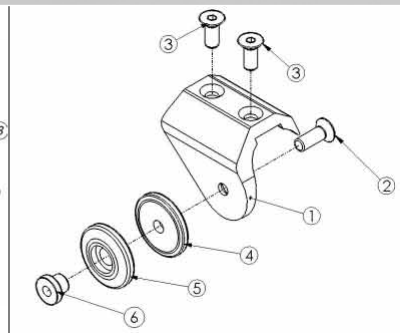


Fig. 14 Front attachment, right

The rear attachment is mounted around the backrest tube. Loosen screw (8) and clamp the bracket (10) around the tube and reassemble the parts as in **fig. 13**. The front attachment is mounted with on the chassis tube with two screws (3) in the predrilled holes. Use plate X (**Fig 8**) to the sideguard for rearwheel 24" on Panthera X. Adjust the plate to the right position regarding the depth of the backrest position. See **fig 11**.

Mounting on Panthera X

Rearwheel 25" and 26"



Fig. 15

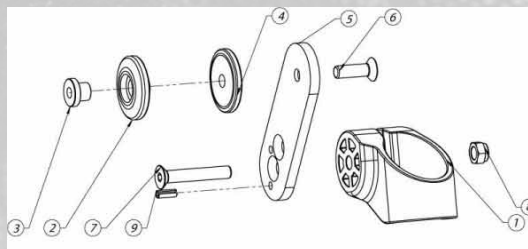


Fig. 16 Rear attachment, right

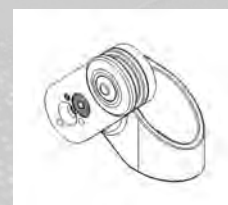


Fig. 17 Rear attachment 25", right



Fig. 18 Rear attachment 26", right

Mounted as for 24" rearwheels, except for the raising kit for 25" and 26" rearwheels on the rear attachment. Note the difference in position of the screw and pin for 25 or 26" rearwheels, see **fig 17-18**. Use plate 25"-26", **fig 10**, for the front attachment on the sideguard. Adjust the plate to the right position regarding the depth of the backrest position. See **fig 11**.

Mounting on U2 light

Rearwheel 24"



Fig. 19

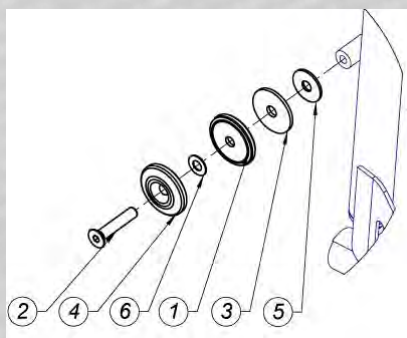


Fig. 20 Rear attachment, right

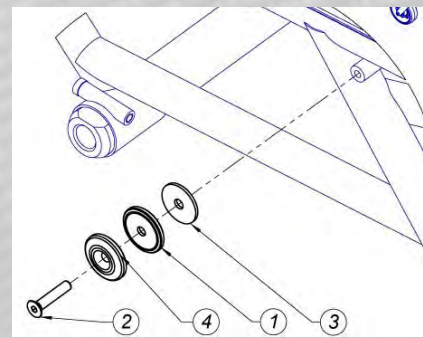


Fig. 21 Front attachment, right

The rear attachment is screwed on to the threaded hole on the backrest. The rear attachment is mounted on the chassis tube in the pre drilled holes. Use plate U2 light, **fig 9**, for the front attachment on the sideguard. Adjust the plate to the right position regarding the depth of the backrest position. See **fig 11**.

Mounting on U2 light

Rearwheel **25"** and **26"** for backrest height 30, 35 and 40 cm



Fig. 17 Rear attachment, right

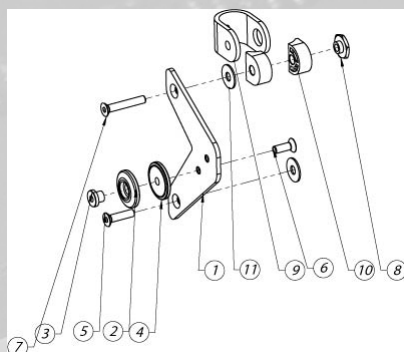


Fig. 18 Rear attachment, right

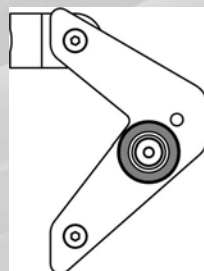


Fig. 19 For 25" rearwheel

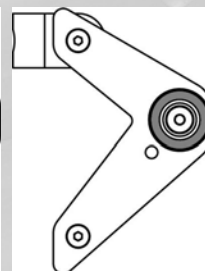


Fig. 20 For 26" rearwheel

At 25" and 26" rearwheels a raising kit is used on the rear attachment. For backrest height 25 cm, see below. The lower attachment is screwed in the threaded hole on the backrest and the upper is clamped around the backrest tube. Adjust the position of the "wheel" for either 25 or 26" rearwheel. see **fig 19 and 20**. The front attachment is the same as for 24" rearwheels. Use plate 25"- 26", **fig 10**, for the front attachment on the sideguard. Adjust the plate to the right position regarding the depth of the backrest position. See **fig 11**.

Mounting on U2 light

Rearwheel **25"** and **26"** for backrest height **25 cm**

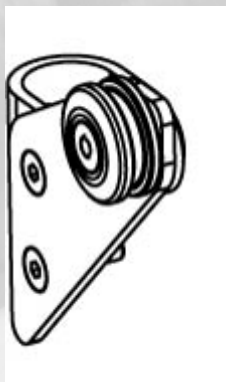


Fig. 21 Rear attachment, right

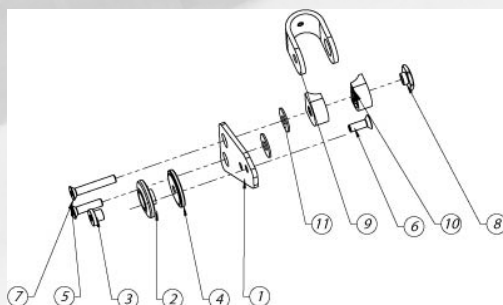


Fig. 22 Rear attachment, right

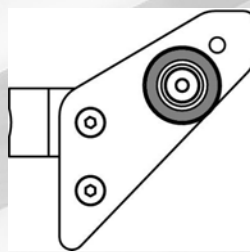


Fig. 23 For 25" rearwheel

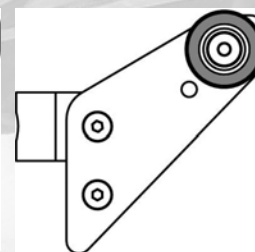


Fig. 24 For 26" rearwheel

At 25" and 26" rearwheels and backrest height 25 cm a raising kit is used on the rear attachment. The lower attachment is screwed in the threaded hole on the backrest and the upper is clamped around the backrest tube. Adjust the position of the "wheel" for either 25 or 26" rearwheel. see **fig 23 and 24**. The front attachment is the same as for 24" rearwheels. Use plate 25"- 26", **fig 10**, for the front attachment on the sideguard. Adjust the plate to the right position regarding the depth of the backrest position. See **fig 11**.

Article numbers for complete sideguards in pair

art.no.	Description	
4420730	Sideguard carbon small cover U2L	24" wheel Cpl pair
4420733	Sideguard carbon small cover U2L	25-26" wheel Cpl pair for backrest 30-35
4420736	Sideguard carbon small cover U2L	25-26" wheel Cpl pair for backrest 25
4420740	Sideguard carbon small cover X	24" wheel Cpl pair
4420743	Sideguard carbon small cover X	25-26" wheel Cpl pair
4420630	Sideguard carbon large cover U2L	24" wheel. Cpl .pair
4420633	Sideguard carbon large cover U2L	25-26" wheel Cpl pair for backrest 30-35
4420636	Sideguard carbon large cover U2L	25-26" wheel Cpl pair for backrest 25
4420640	Sideguard carbon large cover X	24" wheel Cpl pair
4420643	Sideguard carbon large cover X	25-26" wheel - Cpl pair