

Assembly instruction

Sideguard with cover

art.nr. 4420010 Sideguards with cover pair
art.nr. 4200040 Sideguards with cover 26" pair



Fig.1 Sideguard with cover

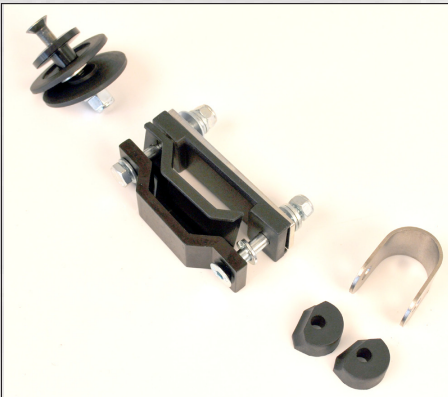


Fig. 2 Attachment sideguard with cover, one side

NOTE! On older chassis without lug you need an additional attachment with art.no. 4420014. Older backrest without lug needs to be changed to a new.

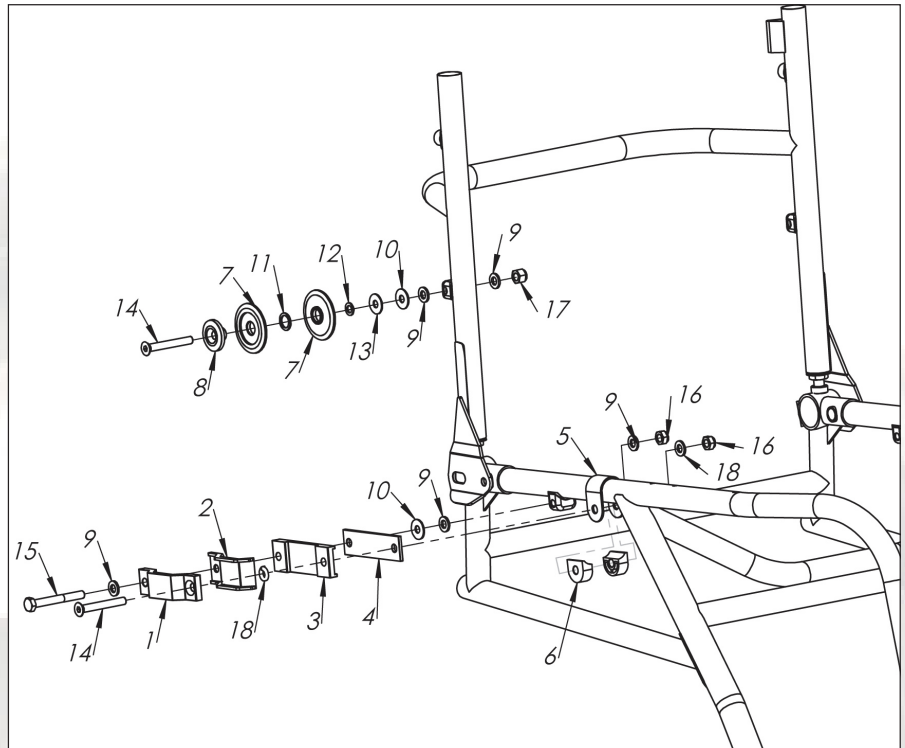


Fig. 3 Exploded view

- | | | |
|-----|-----|------------------------------------|
| 1. | 2p | Armrest mounting clamps |
| 2. | 2p | Armrest bushings |
| 3. | 2p | Side guard bushings |
| 4. | 2p | Short side guard mounting brackets |
| 5. | 2p | Rustproof reinforcement supports |
| 6. | 4p | Armrest clamp insert pieces |
| 7. | 4p | Plastic side guard cogs |
| 8. | 2p | new side guard cog fasteners |
| 9. | 10p | Washers 6x12 |
| 10. | 4p | Washers 6x16 |
| 11. | 2p | Washers 10x14 |
| 12. | 2p | Washers 6x10 |
| 13. | 2p | Washers 6x25 |
| 14. | 4p | Bolts MF6S M6x45 (recessed socket) |
| 15. | 2p | Bolts M6S M6x45 (hexagon head) |
| 16. | 4p | Locking nuts M6 low |
| 17. | 2p | Locking nuts M6 high |
| 18. | 4p | Washers FBB M6 |

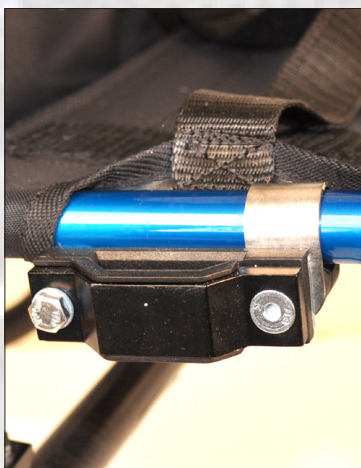


Fig.4 Attachment on chassis



Fig.5 Attachment on backrest

Loosen the adjustment band for the seat upholstery slightly. Attach the side guard mounting loosely on the chassis as shown in fig 3 and 4. (The bolt with the hexagon head (Fig 3 pos15) should be placed closest to the back on both sides)

Assemble the cog fastener and plastic cog on the backrest frame as shown in fig 3 and 5

Insert the side guard into the mounting. Tighten the bolts securely using the hexagon head (Fig 3 pos 15). Tighten the socket bolt (Fig 3 pos 14). Adjust using the recessed socket bolt (Fig 3 pos 14) so that the side guard is easily inserted and removed. Loosen the 'Armrest mounting bushing' (Fig 1 pos 1) and adjust the side guard lengthways so that it is aligned with the plastic cogs on the backrest frame (fig 5). When the side guard is aligned with the plastic cogs, tighten the mounting bushing again.